



GAMMO TOOLS GT1D and GT2D

OUR PRECISION FOR YOUR SAFETY.
We measure radioactivity & radon
and calibrate your measurement system.



GAMma MObile are additional tools and accessories for our gamma probes RS04 and GSP02 in mobile applications. Version GT2D with an internal GM can be used without external probes.

GT1D and GTD2 supplies the RS04 and GSP02 sensors with power and sends the data via USB to a PC or via Bluetooth to our GAMMO APP and/or stores it on an internal μ SD card. Or you send via WIFI the data to a center software solution like, GAMMO Portal or GIHMM Cloud SCADA. The OLED display enables fatigue-free and clear reading of the measured values, even in the dark. With the integrated Lilon battery, the sensors can be operated autonomously for up to 16 hours. A simple keypad for menu navigation can also be used without an APP for quick operation.

Together with the GAMMO Handle every gamma probe (RS04 or GSP02) can be used mobile.

MAIN APPLICATIONS

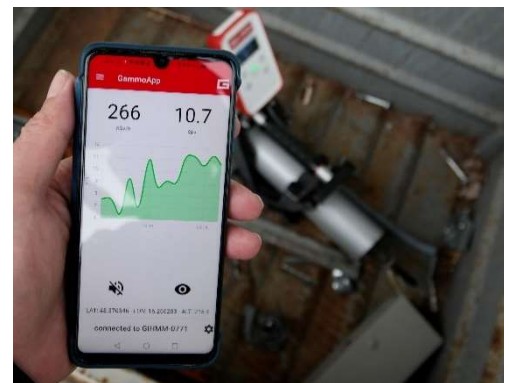
This robust and unique Gamma ray meter is suitable for a variety of potential applications:

- Area Gamma Monitoring
- Mobile Gamma Survey Meter

GAMMO APP

With our GAMMO APP (actual for Android) you can visualize the values and control the Gammo Tools

- indicating the dose rate
- Chart view
- Data storage
- Data export to GIHMM Cloud or GAMMO Portal



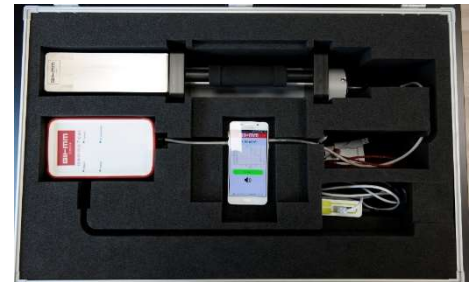
GAMMO HANDLE

On our handle you can easily mount the probe without any screws. The GTx's are just simply clipped on the handle. Ready in seconds.



GAMMO CASE

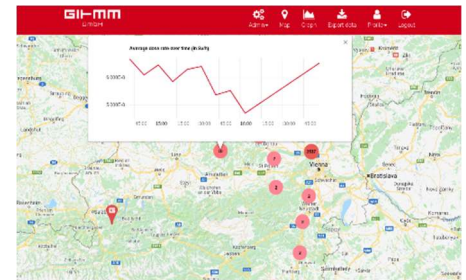
In the GAMMO CASE you can store all those accessories (incl. probe and additional power bank) for an easy transport. The probe can also operate in that case during transport



GAMMO PORTAL

GAMMO Portal is a small WEB based application for gamma monitoring stations (recommended for max. 10 stations)

- Map for actual location incl. indicating the dose rate
- Chart view
- Station administration
- csv export



TECHNICAL DATA & FEATURES

Type	GT1D & GT2D
Gamma sensor	GT1D: no internal sensor (only external) GT2D: internal sensor available (GM-Tube)
Charging/Communication connection	U_{IN} : 4,5V – 6V (DC); I_{IN} : max. 1800 mA I_{IN_charge} : up to 1000mA U_{OUT} : 5V +/- 10% (DC); I_{OUT} : max 2 A Communication: USB-Signal
Internal probe	GM-Tube (up to 100mSv/h)
Temperature range	-20 °C to +60 °C
Wireless communication	Bluetooth: BLE (Bluetooth Low Energy)2 WiFi: 802.11 b/g/n; 2,4Ghz
Wired communication	USB-Signal
Displays	2.42" OLED display (128 x 64px (~30 x 57 mm)) 7 LED multicolour 2 LED charging status
Buzzer	Yes
Vibration	Yes
Shock protection	Yes
Real Time Clock	Yes
Data storage memory	Yes (µSD-Card)
Flashlight function	Yes
Powerbank function	Yes
GPS	GPS, GLONASS, QZSS - Supports DGPS, SBAS (WAAS/EGNOS/MSAS/GAGAN)
Internal accumulator	nom. 7500 mAh; nom. 3,7 VDC Lilon
Operation time	GTx + RS04: up to 16h
Charging time (GTx switched off)	Up to 8h (depending on charge current)
Connections IP67	Yes
Dimensions (incl. shock protection)	LxWxH 170x95x44 mm
Weight (incl. akku. & shock protection.)	GT1D: approx. 450 g GT2D: approx. 480 g

